



SPOTLIGHT ON PRODUCTS

TOP SIXTEEN WASH BAY ACCESSORIES YOU NEED!



www.alkota.com

SPOTLIGHT ON PRODUCTS

TOP SIXTEEN WASH BAY ACCESSORIES YOU NEED!



1 ALKOTA PIVOTING HOSE REEL

Pivoting Hose Reels are a great way to organize and save on the wear and tear of expensive hoses. The 200 ft. hose reel comes complete with a hose guide and is a great accessory to store up to 200 feet of a 3/8" hose. Hoses are expensive and a hose reel protects your hoses. The reel is rated for up to 5,000 psi and has a max temperature rating of 250°F.



REEL-ALKP38200

2 ASSEMBLY (HOSES NOT INCLUDED) HTS-990000 - HOSE TROLLEY KIT



HTS-990000

Ever tired of tangled up greasy wash bay hoses? Trolley Systems are a fantastic way to manage Hoses; Keep them in a neat and tidy corner of the shop and with the pull of the wand the hose will follow you throughout the bay. Hoses will last longer, stay clean and make your wash bay look professional. The system comes with 10 cable carts, the cable and lag bolts for attaching into the walls.

3 FOAM CANNON

The Foam Cannon is the perfect tool that allows the perfect mixture of air, water, and detergent to give you a thick foamy clinging soap to the surface of what you are cleaning. Foam Cannons work from 1.8 GPM to 6.6 GPM. Detergent goes out of the foamer at a lower pressure and rinses well under high pressure. Foam Cannons adapt to almost any pressure washer on the market. Shown below is our Part Number J06-00350 Foam Cannon.



J06-00350

4 J06-DKP66039-6'3" CEILING MOUNTED OVERHEAD BOOM



J06-DKP66039

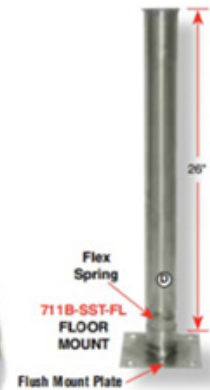
Ceiling-mounted booms are a great way to conserve hoses and give you years of trouble-free use. In addition, the live-action swivel performs well under pressure and many year's worth of continuous leak-free heavy-duty use. The boom has a rugged polished stainless steel construction, is self-lubricating, and comes with an insulated high-pressure hose rated up to 4000 psi. Length is: 6'3", 3/8" inlet & outlet, unit will handle up to 230° Temperatures.

5 VARIOUS STAINLESS STEEL WALL HOOKS & WAND HOLDERS.

We have a wide variety available:



Hose Hanger SS
Z04-00475



Floor Mount Wand Holder
Z04-00474



Wall Hooks
Z04-00473



JA6-00335 - Wand Holder 24" SS

SPOTLIGHT ON PRODUCTS

DOWN STREAM INJECTOR



Down Stream Injectors are a great way to apply detergent quickly and under low pressure. The DownStream Injector applies everything after the pump. Injectors are generally sized to the pump that you have and are run by an orifice. You can also get an injector that is adjustable to pull more soap or less soap through the hose, gun, and wand. Down Stream Injectors are also directional, which means there should be an arrow indicating which way the flow goes to make it draw detergents properly. You can also add quick couplers, a longer or shorter ¼" chemical pick-up line, and a check ball to stop the unit from back-feeding out of the hose and filling your chemical source. **Part Number JA6-00246, 3 to 5 GPM Adjust Injector**

MAT HOLDER



There's no better way to clean a floor mat than to have a clamp on the wall so that you can pressure wash the dirt off of your mats. This is a durable spring loaded mat holder that will keep things in place under high pressure. **Part# Z01-00171**

FIBER GLASS BRUSH POLES



Telescoping version

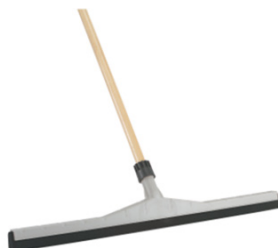


Straight handle version

- J06-00339** 4 to 8 ft Telescoping Fiberglass Handle
- J06-00340** 6ft to 12 ft Telescoping Fiberglass Handle
- J06-00341** 8ft to 16 ft Telescoping Fiberglass Handle
- J06-00363** 4ft Straight Fiberglass Handle
- J06-00364** 5ft Straight Fiberglass Handle
- J06-00365** 6ft Straight Fiberglass Handle

FLOOR SQUEEGEE

The Floor Squeegee is a mandatory item to keeping your wash bay floor clean. We sell one of the best floor squeegees on the market! If you've got a wash bay you need one. Comes complete with squeegee head and pole. Assembly includes a 5 ft wooden handle and a 30" foam squeegee head. **Part# Z01-SQUEEGEE**



DUAL LANCE/VARIABLE PRESSURE WAND ASSEMBLY



Dual Lance Wands are a great way to change how your pressure washer works for you. A variable pressure wand does exactly what it says. It will cut the pressure down to a garden hose pressure with the twist of the side handle & deliver a lighter flushing spray versus the high-pressure spray. It is also a great adder for the downstream injector & pulls the soap with a venturi action through the hose gun & wand only at low pressure. This allows you to apply any detergents through a d.s.i. without having to change the nozzle. Once you have covered your targeted wash area, simply close the handle back up & go into rinse mode at high pressure. **Part Number J06-00152**

TRUCK AND CAR WASH BROOMS



Foaming Brush Part# J06-00360

High/Low Brush P#J06-00327
& Flat Brush P# J06-00326

WATER BROOM



16" in action



Water brooms are an accessory that you can add to any pressure washer. The water broom allows you to clean a large area with a spray bar and casters with nozzles. You need a pressure washer that ideally puts out 1000 to 4000 psi and 3 to 4 GPM. The water broom comes with a quarter-inch quick-disconnect plug and three or four fixed spray nozzles depending on the model selected. The water broom is ideal for cleaning concrete, blacktop, decks, patios & pool areas. If you've got a hard surface that needs frequent cleaning, this is the ultimate cleaning tool that will help eliminate soils, dirt & debris quickly.

SPOTLIGHT ON PRODUCTS

ROTARY SPRAY NOZZLES

13



Roto nozzles are a great way to increase your cleaning effectiveness. A roto nozzle is a zero-degree nozzle that when put under pressure will start the tip spinning and give you a 25° spray pattern in a circular pattern. The key to this tip is to learn how to use it as well so that you know what kinds of surfaces to use it on. Although this tip will speed up the process it can also do damage if used improperly on the wrong types of surfaces. The roto tip works best to clean concrete or to de-mud something that has excessive dirt or grease.

Always test surfaces before using this tip. Also always start this tip in the downward position to keep from damaging the internal parts of the tip.

SCALETROL SYSTEM

The Scaltrol units help to protect your pressure washer investment from scaling up. The unit will reduce the amount of mineral buildup and water staining in a coil assembly. The Scaletrol system comes in two sizes, the 50,000-gallon system and the 100,000-gallon system. They are instrumental in changing the molecular make-up of the water going through your pressure washer system. SC-50 Part# **Z14-OSC50** & SC100 Part# **Z14-OSC100**



CLEANERS

15

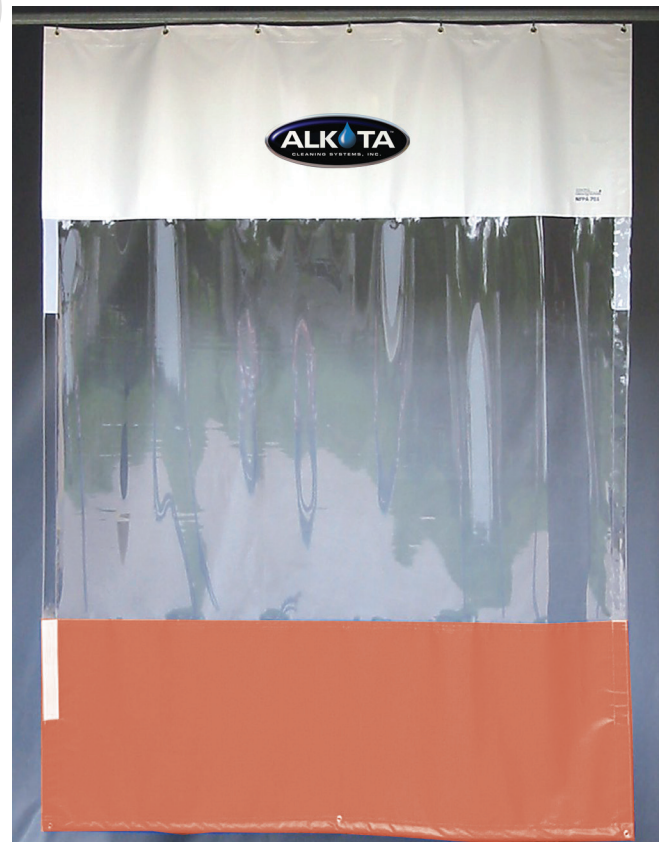


The X-treme Flat Surface Cleaner is the perfect surface cleaner for any type of large surface area or contractor work. The 360° castors guarantee an effortless cleaning experience.

The Specialty Swiss engineered high RPM swivel also guarantees long-lasting operation under the toughest of conditions. The Extreme Surface Cleaner has a spray arm with 2 ¼" nozzles that spin and provides a 21" cleaning path with uniform cleaning surfaces reducing water consumption and labor cost by 80%. The Extreme Surface Cleaner will handle flow rates of 3 to 8 GPM and minimum pressures of 1500 psi to 4000 psi. It will handle up to 250°F and weighs 24lbs. Unit dimensions are 28" L x 22" W x 37" T. Part# **SC-FLOR520ALK**

ALKOTA WASH BAY CURTAINS – PLEASE CALL FOR ASSISTANCE ON ORDERING

16



We also have several other Accessory options available. Please consult your local Alkota dealer for any accessories you may be looking for and we'll help you find them!